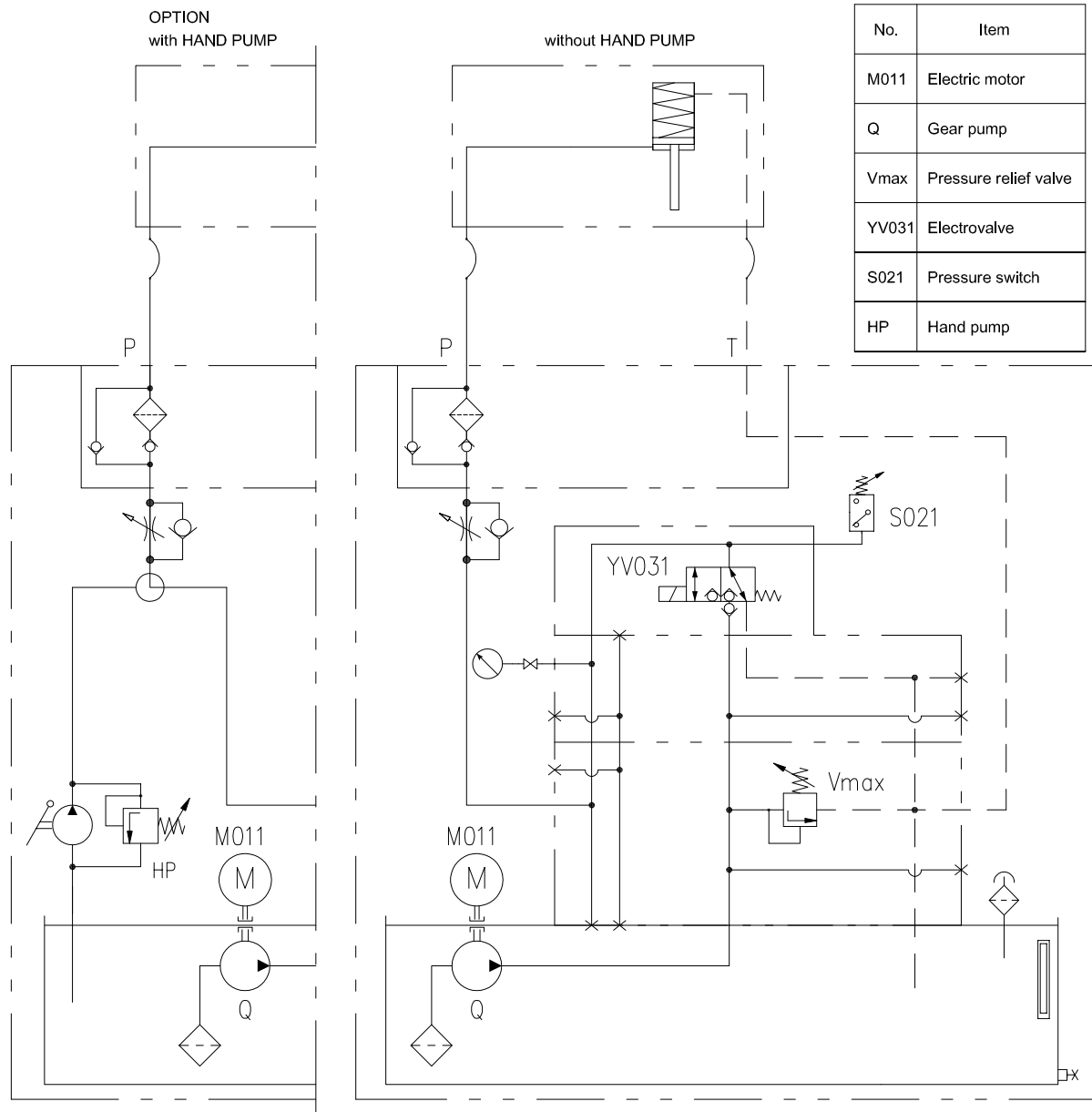


TYPE	FORCE (kN)	A	B	C	D	E	E1	F	G**	H	I	L	M*	N	WEIGHT(kg)
DBRB11-0091	91	556	299	200	24	100	/	4	M20	130	130	556	63	300	95
DBRB41-0160	160	585	564	210	52	45	85	8	M20	180	180	590	80	355	215

(*) FOR DIFFERENT VALUES PLEASE CONTACT OUR TECHNICAL OFFICE
(**) CONNECTION SCREWS CLASS :10.9 ARE TO BE FORESEEN

All dimensions in mm

Alterations reserved without notice



N°1 WHEEL BRAKE: OPENING TIME 1s				
Type of brake	Q= l/min	Opening pressure MPa	Pressure switch MPa	Pressure relief valve MPa
DBRB11-0091	3	17	19	22
DBRB41-0160	5,7	13	15	18

DIFFERENT OPENING TIMES AND NUMBER OF SUPPLIED BRAKES ON REQUEST

ELECTRIC MOTOR - M011 *	From 0,75kW to 3 kW- 400V - 50Hz
ELECTROVALVE - YV031 *	24V - DC
GEAR PUMP	From 1,6 to 9 l/min
OIL TANK	20l
* OTHER SUPPLY VOLTAGE ON REQUEST	

SCI-DBRB20

